

# Partners in Planning

A PUBLICATION OF THE HILLSBOROUGH COUNTY CITY-COUNTY PLANNING COMMISSION



## RIVER NEWS

*Serving Tampa, Temple Terrace and Hillsborough County*

### WATER CONSERVATION KEY AS DRY SEASON SETS IN

- Publications**
- RIVER NEWS
  - Newsletter
  - Permits Report
  - Economic & Demographic Summary
  - Tampa Neighborhood News



Putting water conservation into action helps the Hillsborough River to have sufficient water over the normally dry winter and early spring months. Cooler temperatures help by not requiring any, or little, watering of plants. Most people tend to over-water in the winter-spring month as they have become accustomed to during the rest of the year when weather conditions require plants be watered more frequently because of the warmer temperatures. Your water bill will be lower and your plants will be healthier if you cut back your watering schedule for the next few months.

Cutting back on watering plants isn't the only way to conserve water. If you water your plants with a hose place a shutoff nozzle on your hose to control the flow of water so you only use what you need. Remember to turn the water off at the spigot to prevent leaks. Repair dripping faucets by replacing washers. If your faucet is dripping at the rate



of one drop per second, you can waste 20 gallons of water each day. A steady stream of water the size of a pencil can waste from 7,200 to 13,000 gallons of water each day (depending upon water pressure). Imagine what that waste of water translates to on your water bill!

Another way to conserve water is to maximize water-using appliance efficiency. Run automatic dishwashers only when fully loaded. Set clothes washers to the appropriate water level for the size of load you are washing. For washers with variable water volume settings, select the minimum amount required per load. If load size cannot be set, operate the washer with full loads only. Use the shortest wash cycle for lightly soiled loads. Normal and permanent press wash cycles use more water. Check hoses regularly for leaks. Pre-treat stains to avoid re-washing. By using these cleaning appliances wisely you can realize a savings in water use and money and help keep the river flowing.



## 2006

Happy New Year!

### Inside

TAC Meetings Summary, p. 2

Manatee Monitoring, p. 2

River Levels, p. 2

Retrospect, p. 3



## TAC Meetings Summary

The Technical Advisory Council met October 18th, November 15th at the Tampa Union Train Station. Among discussion/reports at the meetings were:

- Recommended Tampa's Curtis Hixon Park be designated as a dedicated park site.
- Presentation/discussion regarding Tampa Riverwalk Concept Plans.
- Discussed the need for marine construction standards that would further protect the river environment, view-vistas and aesthetics along the river.
- Review of 3 and support of 2 Tampa Port Authority Minor Work Permit Applications.
- Discussed Tampa Bay Water proposal regarding re-evaluation of Total Maximum Daily Loadings (TMDLs) for the lower Hillsborough River.
- Status Report on City of Tampa Stormwater Department Grant Applications for Acquisition of De-Pollution Craft.
- Status reports on recent Hillsborough River levels.
- A briefing on Temple Terrace Riverfest Event.
- Report on recent manatee activity in Hillsborough River.

Future TAC meetings scheduled are on the third Tuesday of each month. All TAC meetings are scheduled to be held at the Tampa Union Train Station, 601 N. Nebraska Avenue, Tampa, second floor meeting room unless otherwise noticed. TAC meetings begin at 1:30 p.m. To review River Board and TAC agendas visit our website at [www.hillsboroughriver.org](http://www.hillsboroughriver.org) and click on *Agendas* under the River Board/TAC logo or contact staff at 273-3774, extension 323.

## Minimum Flow for Lower River to be Discussed

The Southwest Florida Water Management District staff is scheduled to present and discuss a revised minimum flow for the lower Hillsborough River which will be recommended to the District Governing Board next year for adoption. The draft report recommends setting the minimum flow at 26cfs. The River Board/TAC have been participating in the formulation of the minimum flow for the river since the late 1990s. An interim minimum flow of 10cfs for the lower river, downstream of the dam, was adopted by the District in 2000. This presentation/discussion will take place at the January 17, 2006 TAC meeting. Come and take part in the discussions!

## MANATEE SEASON NOV 15 thru MARCH

### GO SLOW -

Watch the Waterway  
as if their lives  
depend on it.....  
.....They do!



## River Board Briefed on TAC Work

The Hillsborough River Interlocal Planning Board met on December 9, 2005 and was briefed on a number of river issues the TAC has been working on over the past months. The River Board was briefed on a took action to:

- Support a Future Land Use Element text amendment that would create a Planned Environmental Community Plan (PEC) Category in Hillsborough County. The River Board's support for the concept of a PEC land use category came with the condition that the applicant work with Planning Commission and EPC staff to address issues raised by those agencies in relation to the proposed new land use category.
- Supported twelve Tampa Port Authority Minor Work Permit Applications as recommended by the TAC. The River Board was briefed on and discussed:
  - Proposed use of treated wastewater for Hillsborough River downstream augmentation and associated issues related to the proposal.
  - City of Temple Terrace riverfront improvement plans as part of downtown redevelopment. Mr. Dana Carver provided the River Board with an overview of the project as proposed and discussed the steps that will be taken to realize this riverfront improvement.
  - Status report on recent river levels.
  - Manatee monitoring report. The River Board was told that the County Mosquito & Aquatic Weed Control Department has provided the River Board/TAC with useful information observing manatees in the river from its helicopter. Information provided includes manatee sightings, counts and photos.



## New Years Resolution: Go Explore the River!

The Hillsborough River offers a wide variety of interesting views of our cities and county. The view above was taken at one of the new Ribbon of Green Park spaces in downtown Tampa. The scenery along the river offers urban scenes, suburban surroundings and more wild areas in its northern reaches. This next year why not reach out and visit your river! It's a beauty!

**YOUR River Board wants to  
hear from YOU! Call the  
River Hotline at 272-5940**



# THE RIVER BOARD & TAC- A 20-YEAR INTROSPECTION

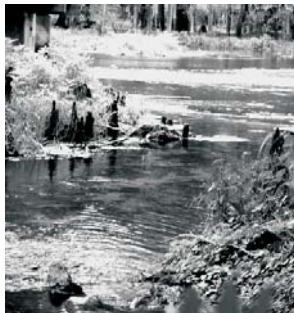


The Hillsborough River Interlocal Planning Board & Technical Advisory Council have been working on the Hillsborough River's management, within Hillsborough County, Temple Terrace and Tampa, for 20 years.

In recognition of this effort, during the year leading up to the River Board/TAC's anniversary date in June, each issue of the *River News* will feature an article highlighting the many fine agencies and people that have helped in this endeavor.

The Southwest Florida Water Management District has provided the River Board and TAC with support throughout their 20-years of river management efforts. At the outset of the River Board/TAC's work, the District was crucial in providing information documenting historic and existing conditions in and along the river corridor. Thanks to the efforts of the District's representatives on the TAC over the years such as Pete Hubble, Richard Owens, Hung Mai, Syd Flannery and long-time staff representative Rand Baldwin, the TAC has been informed and updated on environmental issues that affect the river.

The SWFWMD oversees many aspects of the Hillsborough River's management, assuring the river resource is protected and respected. One of the District's primary roles is to review and issue water use permits.



*For much of the year, the flow in the river is maintained by outflow from Crystal Springs.*

In regard to the Hillsborough River, the amount of water permitted to be withdrawn from the river and associated water-features is critical in maintaining the riverine system's viability. Over the years the District has been critical in evaluating the impacts resulting from new or increased permitted withdrawals. The most controversial withdrawal permits have involved

withdrawals from Crystal Springs, the City of Tampa and Tampa Bay Water. Balancing potable water demands with environmental needs is a challenge the District staff has worked through by careful review of historical data, projecting impacts of various scenarios of withdrawal schedules and calculating the water budget of the river basin as a whole.

Most recently, the District has been in the process of establishing minimum flows and levels for the Hillsborough River and Sulphur Springs. A provisional minimum flow for the lower river, downstream of the dam, was set in 2000, and is being revisited as the rest of the river system's flow management is being reviewed. Minimum flows for the river are expected to be proposed by the District in 2006.

Another important role the District carries out in relation to the river corridor has been acquisitions and land



management. The District controls over 45-thousand acres of land in the Hillsborough River basin, portions of which are accessible to the public. Through the District's stewardship, these lands, critical to maintaining or

improving the river corridor, are held in public trust and managed by the District. These holdings improve the river's water quality by functioning as natural filtration/recharge areas. These lands also accommodate habitat for one of the most diverse populations of wildlife in the state. The District works to enhance existing habitat areas and develop new sites for a variety of species.

Another important contribution the District makes is its commitment to provide public access on some District managed lands. Passive recreational opportunities ranging from marked hiking trails, horse trails and canoe/kayak launching facilities are available to the public. Trails weave in and along the river in many places, giving the casual observer many opportunities to view wildlife living in the river along its banks.

Actively promoting water conservation is yet another aspect of the District's work that helps to benefit the Hillsborough River. Through the District's conservation programs millions of gallons are saved annually that might not otherwise be available to make the Hillsborough River a vibrant and lively waterway. Through substantial efforts the District helps promote water conservation in many ways including identifying and using proper irrigation methods, using appropriate plantings, limiting non-water dependent uses of water resources and providing a wide variety of information on the topic of water conservation practices.



*Tampa By-Pass Canal helps control flood waters on the Hillsborough River.*

Another primary charge of the District that directly affects the river is control of flows to prevent flooding. The District has constructed and operates a number of control structures that contain potential flood waters in the Hillsborough River basin. Most notable of these structures are the City of Tampa dam which is owned and operated by the city but regulated for flows by the District and the Tampa By-Pass Canal which can be used to shunt water from the upper portions of the river during high-flow periods.

Thanks to the District's on-going efforts to manage the river from many aspects that help keep the Hillsborough River a regional drinking water supply, a wildlife refuge and a recreational resource, the River Board & TAC acknowledge and appreciate the outstanding work District leadership and staff have provided over the past 20 years. Thanks to the District, and the other partners that play a part in keeping the Hillsborough River the wonderful waterway that it is, we can all continue to enjoy the bounty provided by this river system.

# RIVER NEWS

Editor: Alan Wright

Robert B. Hunter, FAICP - Executive Director/HCCCPC

PRSR STD  
US POSTAGE

**PAID**

TAMPA, FL  
Permit No. 295



Hillsborough River Interlocal Planning Board  
& Technical Advisory Council  
601 E. Kennedy Blvd., 18th Floor  
PO Box 1110  
Tampa, FL 33602 1150

**Change Service Requested**

