

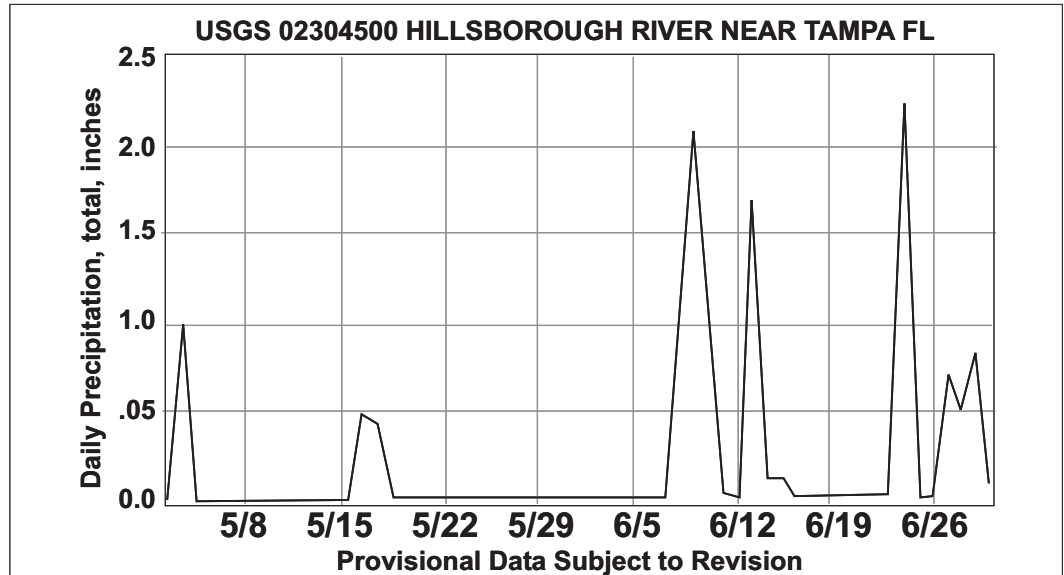
# Partners in Planning

A PUBLICATION OF THE HILLSBOROUGH COUNTY CITY-COUNTY PLANNING COMMISSION

## RIVER NEWS

Serving Tampa, Temple Terrace and Hillsborough County

- Publications**
- RIVER NEWS
  - Newsletter
  - Permits Report
  - Economic & Demographic Summary
  - Tampa Neighborhood News



### River Makes Summer Rebound

The Hillsborough River is making its annual comeback thanks to nearly daily deluges from the skies above. River levels were in decline over the months of April, May and early June although not to the extent that it had been over the past few years. This year, rather significant rainfall occurred during what are historically dry months, helping to keep the river levels up despite hot temperatures.

Since the beginning of June, the normal summer rainfall pattern fired up, bringing with it rising river levels and even some flooding. In the Sulphur Springs area some rainfall events produced enough water to seemingly overwhelm some of the stormwater systems in that neighborhood. At some locations water gushed up out around manhole covers and backed up from stormwater inlets. The flooding problems turned out to be the result of

pipng that had become clogged. Yet another important reason for keeping our streets clean of litter and other debris such as yard trash. Keeping drainways clean and clear of debris helps to prevent flooding and promotes a safer environment. Flooding can cause all kinds of property damage and high water is especially dangerous on roadways.

The Tampa Stormwater Department confirmed several concerned citizens did the right thing by reporting the flooding conditions in their area. By reporting such conditions the City can be more responsive and our community kept safer.

As the summer progresses keep in mind, too, that since nature is providing a bountiful amount of rainfall, irrigating outdoor plants should be unnecessary. This will help to keep water in the river at a good level and keep your plants from becoming over-watered as well.

### Inside

TAC Meeting Summaries, p.2

Funding Available for Environment p.2

Natural Shores a Benefit p.3



# TAC Meetings Summary

The Technical Advisory Council met on June 15th at the Tampa Union Train Station.. Among discussion/reports at the meeting were:

: A report by City of Tampa Sanitary Sewer Department staff on efforts to remedy backflow and flooding problems in the vicinity of Riverhills Drive and 50th Street. Redundant shut-off valves have been installed and line improvements have been made.

Review and support of 3 Tampa Port Authority minor work permit applications for projects located on the Hillsborough River.

A status report on recent Hillsborough River levels.

Discussion on participation in the Hillsborough County Watershed Atlas Oral History project as it relates to the Hillsborough River.

An update on production of an educational brochure for community youth, focused on the effects of pollution on the river.

A discussion with representatives of the Scavenger 2000 De-Pollution Craft for ideas to gain public awareness and support for use of the craft in local area waters, including the Hillsborough River.

The TAC meeting on May 18th at the Tampa Union Train Station will feature the following issues:

A presentation on shoreline stabilization techniques.

A Report on Blue Sink/Ewanowski Spring Restoration.

Review of Tampa Port Authority minor work permits.

Update Report on the Establishment of Marine Contractor Licensure in Hillsborough County

Briefing/Discussion Regarding Proposed Blueways for the Hillsborough River.

A status report on recent Hillsborough River levels.

Update on River Board/TAC educational brochure distribution.

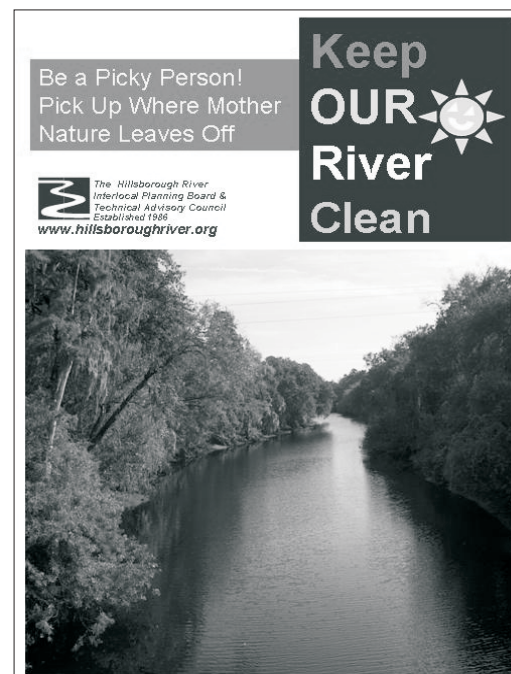
Other issues that may be brought before the TAC by the public.

**All** 2004 TAC meeting will be held in the 2nd floor conference room of the Tampa Union Train Station, 601 N. Nebraska Avenue, Tampa, unless otherwise noticed. Meetings begin at 1:30 p.m. To review River Board and TAC agendas visit our website at [www.hillsboroughriver.org](http://www.hillsboroughriver.org) and click on *Agendas* under the River Board/TAC logo or contact staff at 273-3774, extension 323.

## Looking for Pollution Recovery Fund Projects

The Environmental Protection Commission of Hillsborough County (EPC) is soliciting projects that the Commission will consider help funding. Projects must address pollution. There is more than \$500,000 available for projects that target recovery from pollution within the County. The fund was set up by the Florida Legislature and is used for projects that will restore polluted areas of the county to the condition prior to when the pollution occurred, mitigate pollution effects on the environment or enhance pollution control activities. Projects considered could range from actually carrying out a clean-up project to promoting public awareness to pollution problems within the County.

Applications can be obtained by contacting the EPC via US mail at the Environmental Resources Management Division, 1900 Ninth Avenue, Tampa, FL 33605 or on the EPC web site at [www.epchc.org](http://www.epchc.org). The deadline for applications is August 1, 2004.



## River Board Brochure Debuts with Focus on Litter /River

The Hillsborough River Board & Technical Advisory Council have been combating litter since their inception in 1986. The improper placement or disposal of trash and debris has been a hallmark problem when it comes to water quality, public health, a threat to wildlife and in general a menace to the appearance of the communities located along the river.

Controlling litter is a problem everywhere but poses an even greater challenge when it comes to maintaining the Hillsborough River and other waterways. The best way to stop litter is simply not let it get out of hand, literally. One way the River Board & TAC believe they can help to stop littering is to get the word out by reminding the youth of the community how litter hurts the environment in which they are growing up.

With a grant from the Florida Department of Transportation, District Seven, and staffing from the Planning Commission, a 6-page fold out brochure was developed and printed. The brochure details the impact that littering can have on the environment, animals and the community. The colorful brochure has a focus towards school-age youth but is being distributed to anyone that requests this free brochure.

To request a brochure contact the Planning Commission at 272-5940 and be sure to leave your address.





## ***For Many Reasons Natural Shoreline Important***

Trees, shrubbery and underbrush all play an important part in forming a natural border for the river. A natural shoreline provides a number of benefits, some we can't easily appreciate.

First and foremost, natural shorelines provide habitat for all the small and relatively large animals that live and roam the Hillsborough River corridor. Shorelines that are vegetated provides cover for animals as they move along the river looking for food. Without plants along the shoreline these animals would be forced to move away from the water, something all life depends upon.

Shoreline vegetation helps to curb erosion. Vegetated shores help to stabilize shorelines against natural forces such as tides or wakes. Plant roots can help to hold shorelines together above and below the waterline and minimize the effects of scouring by moving water.

Over-hanging shoreline vegetation benefits extend to helping to moderate the river environment by reducing water and surrounding air temperatures by creating shade. This moderating effect benefits both terrestrial and aquatic animal species.



Natural shorelines have the effect that help protect the river from pollution. Shoreline plants can absorb nutrients that would otherwise make their way into the water cycle. They can also act as a barrier to chemicals.

Vegetated shores have the dubious distinction of being attractors and receptacles for litter and debris that makes its way to the river corridor. Plants along the river are the last line of defense against litter making its way into the waterway. This is also some of the hardest pollution to flush out and remove.

Vegetated shorelines add something else to all the communities along the river. They add aesthetics and the opportunity to possibly see wildlife in and along the river. Natural shorelines add value to the community in providing green spaces. They add beauty.

Alternatives to natural shorelines usually result in the removal of any of the benefits mentioned. Hardened vertical structures do provide protection for the shoreline from the forces of the river's water, but they often add little other benefit. In fact, hardened shores can encourage the forces of erosion by magnifying the



effects of wake action, causing waves to bounce across the river from shore to shore for a prolonged period.

If you have a natural shoreline, work to maintain it and keep it viable. It will help to keep the river healthy and provide food and shelter for the animals in the river corridor. If you are at the point of needing to replace that hardened shoreline, consider installing a natural, vegetated shore that can provide a wide number of benefits in addition to protecting the shoreline.

For more information regarding the installation and/or maintenance of shorelines, contact the Tampa Port Authority at 905-7678, Environmental Section.

**YOUR River Board wants to hear from YOU! Call the River Hotline at 272-5940**



# RIVER NEWS

Editor: Alan Wright

Robert B. Hunter, FAICP - Executive Director/HCCCPC

PRSR STD  
US POSTAGE

**PAID**

TAMPA, FL  
Permit No. 295



Hillsborough River Interlocal Planning Board  
& Technical Advisory Council  
601 E. Kennedy Blvd., 18th Floor  
PO Box 1110  
Tampa, FL 33602 1150

**Change Service Requested**

*Wiley the Tree Snake waits for a little summer fun with boaters below...*

